

Crystelle  
Boutique



Step-by-Step Sewing Instructions

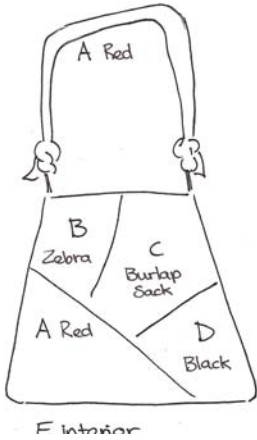


Melissa  
**HANDBAG PATTERN**

©2009 Crystelle Boutique

# Melissa Sewing Instructions

As seen in Haute Handbags—Fall 2009  
 © 2009 Crystelle Boutique • Marijke Mill, designer

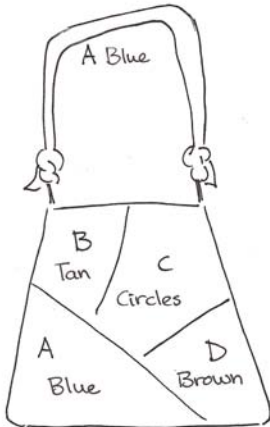


The included templates are for ease with choosing your fabrics and piecing them together properly. The top left illustration shows the famous Melissa PotatoPurse version as featured in Haute Handbags, fall 2009. Below it is the version used in these instructions.

If you prefer to use fabrics of your own choosing, the “blank” template at the bottom right is there for you to fill in which fabrics go where. I find using this little tool quite helpful.

If you choose to use the potato sack fabric, please make sure to cut the potato sack fabric slightly larger. Also cut an additional piece of tan fabric to serve as a lining (facing) behind each loosely woven burlap piece.

Potato sacks are a fun novelty item. Remember, however, that they are not as sturdy as other fabrics and will have to be treated with care. Instructions to increase durability are available for purchase at [CrystelleBoutique.com](http://CrystelleBoutique.com).



## Fabrics:

Fabric A—3/8 yard—soft textured fabric (so it will feel comfortable in your hand, as this will be your handle as well)

Fabric B—remnant—coordinated fabric

Fabric C—1/2 yard—fun print fabric (such as a potato sack; it will also be used on the back)

Fabric D—remnant—coordinated fabric

Fabric E—1/2 yard—lining (stay clear from dark colors so as to avoid the “black-out” effect)

## Other:

Cording—(2) 4 inch pieces

2 Rings

Coordinating thread

Magnetic Snap (optional)

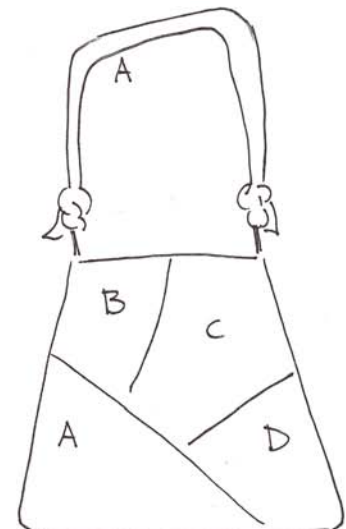
9 inch zipper (if making the zippered pocket)

Melissa Pattern

Interfacing

\*If using light-weight fabric, remember to first apply interfacing to the wrong side.

**ALL SEAMS ARE 1/2 INCH UNLESS OTHERWISE NOTED**



E interior  
C back



1. Cut out all fabric pieces. Press.  
(If you choose to use a potato sack, make sure to follow separate prep instructions)



2. Cut cording to size—finish the ends by either burning (melting) or applying tape.



3. Sew piece B to piece C, right sides together  
4. Sew piece D to piece C, right sides together



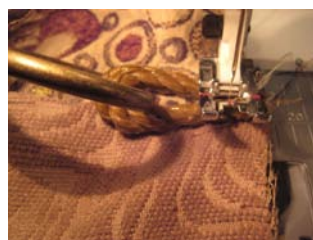
5. Sew Piece BCD to piece A, right sides together



6. Sew front to back, right sides together



7. Fold each ring into each 4 inch piece of cording (these are your “tabs”)



8. Baste these “tabs” to upper side seams (split open the seams) on right side.



9. Fold patch pocket in half, right sides together (it now measures 11"X6"). Press. Sew around the open edges using a ¼ inch seam. Leave an opening for turning.



10. Trim the corners



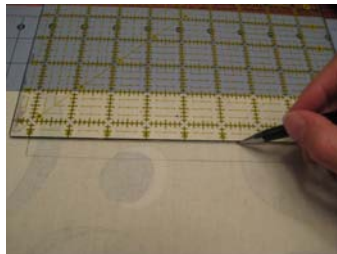
11. Turn, press



12. Mark top center of interior panel & patch pocket  
(you can use either pins or disappearing ink)  
13. Place pocket in middle, 4 inches from top.

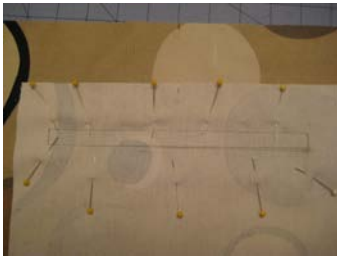


14. Pin, and then sew around the sides and bottom, close to the edge (using a zipper foot) Sew pocket dividers. (In this picture I sewed one 3" divider on the left, and one 3" divider on the right. You may want to make one smaller to use for pens and pencils)



Adding the zippered pocket is optional (steps 15-25)

15. Place the fabric for the zipper pocket wrong side up (10" left to right, 12" up and down)

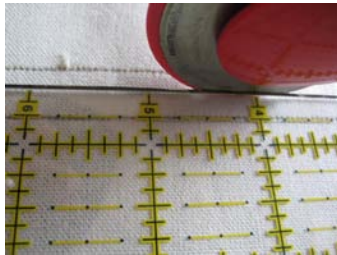


16. 1 ½ inches from the top, draw a centered horizontal rectangle—8” X ½”  
(For some reason, the rectangle in this picture turned out a bit skiwampus—hopefully yours will turn out better the first time; I did sew it straight, so no worries....)

17. Lining up mid-center of interior panel and pocket, place the pocket 2” down centered from the top.

18. Pin in place

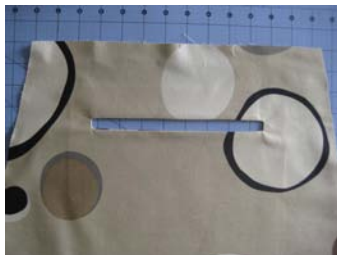
19. Sew on the lines you just drew, using a very small stitch length



20. Cut an opening down the center of the rectangle. Stop ½” from the ends.



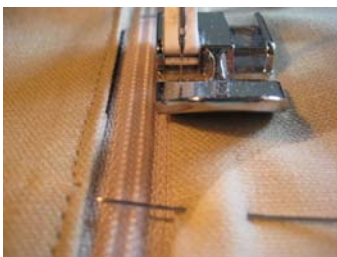
21. Carefully cut diagonally from the stopping point to the corners.



22. Turn the pocket through the hole and press. It now looks nice and smooth and straight.



23. Flip the side over and sew across the little triangle that shows on the side. Repeat on other side.



24. Center the zipper under the opening. Stitch in place using zipper foot.



25. On the back side fold the pocket over horizontally. Pin the open sides together then stitch.



Your zippered pocket is done!

26. (Optional) Add a magnetic snap according to the [Magnetic Snap](http://www.CrystelleBoutique.com) tutorial directions on the blog, accessible at [CrystelleBoutique.com](http://www.CrystelleBoutique.com)



27. Sew the two interior panels together along the sides and bottom, making sure to leave an opening for turning. (I like my opening to be about 8")



28. Insert outer bag into interior bag, right sides together, lining up side seams. Pin, then stitch. Double stitch over the cording "tabs"



29. Turn the bag. Slipstitch (that means by hand) the opening in the lining shut.



30. Insert lining into the exterior bag. Press top, then topstitch

You're almost done... take a deep breath!



31. Fold handle in half lengthwise  
Stitch using  $\frac{1}{4}$  inch seam, leaving an opening in the middle for turning (I like to use about a 6" opening)



32. Trim corners



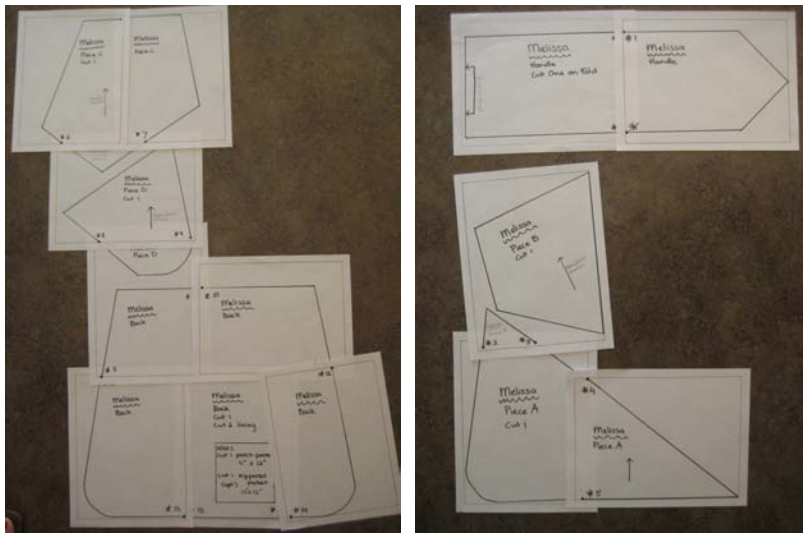
33. Turn. Slipstitch opening shut.



34. Topstitch all the way around, if so desired.  
35. Tie handle to the rings.

You're done! Pat yourself on the back!

First glue or tape the pattern pieces together, matching up dots by starred numbers (see pictures). Then cut out.



Melissa  
Handle





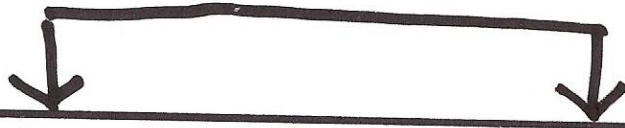
Melissa



Handle

Cut One on Fold

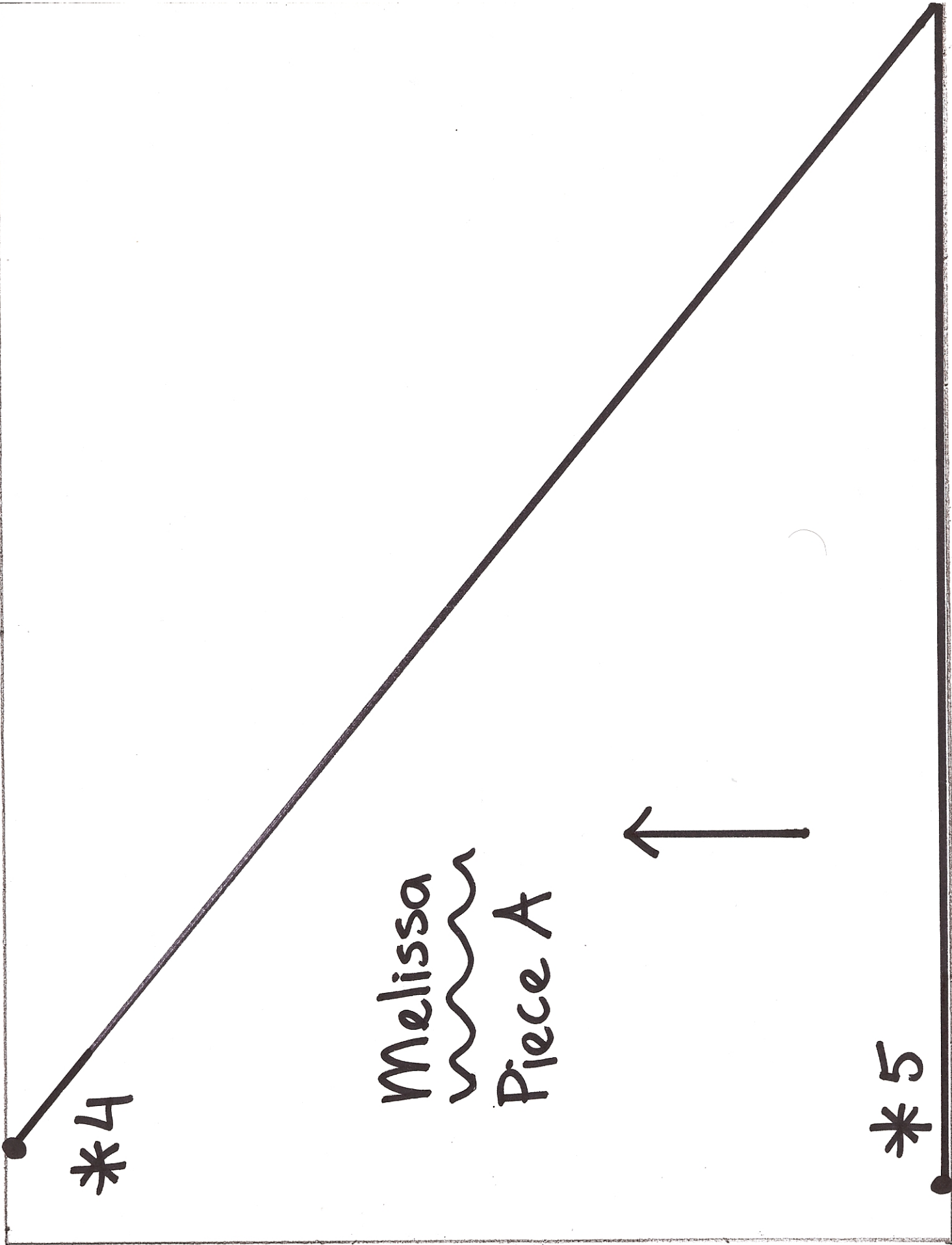
place on fold



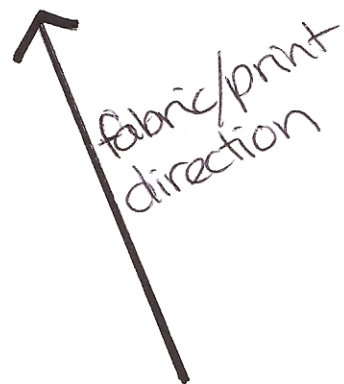
\* 1

\*

Add 2-4 inches to the length of the handle



Melissa  
~~~~~  
Piece B  
Cut 1



Melissa  
~~~~~  
Piece A

\*2

\*3



\*2

\*3

\*4

\*5

Melissa  
~~~~~  
Piece A  
Cut 1

Melissa  
~~~~~  
Piece C  
Cut 1

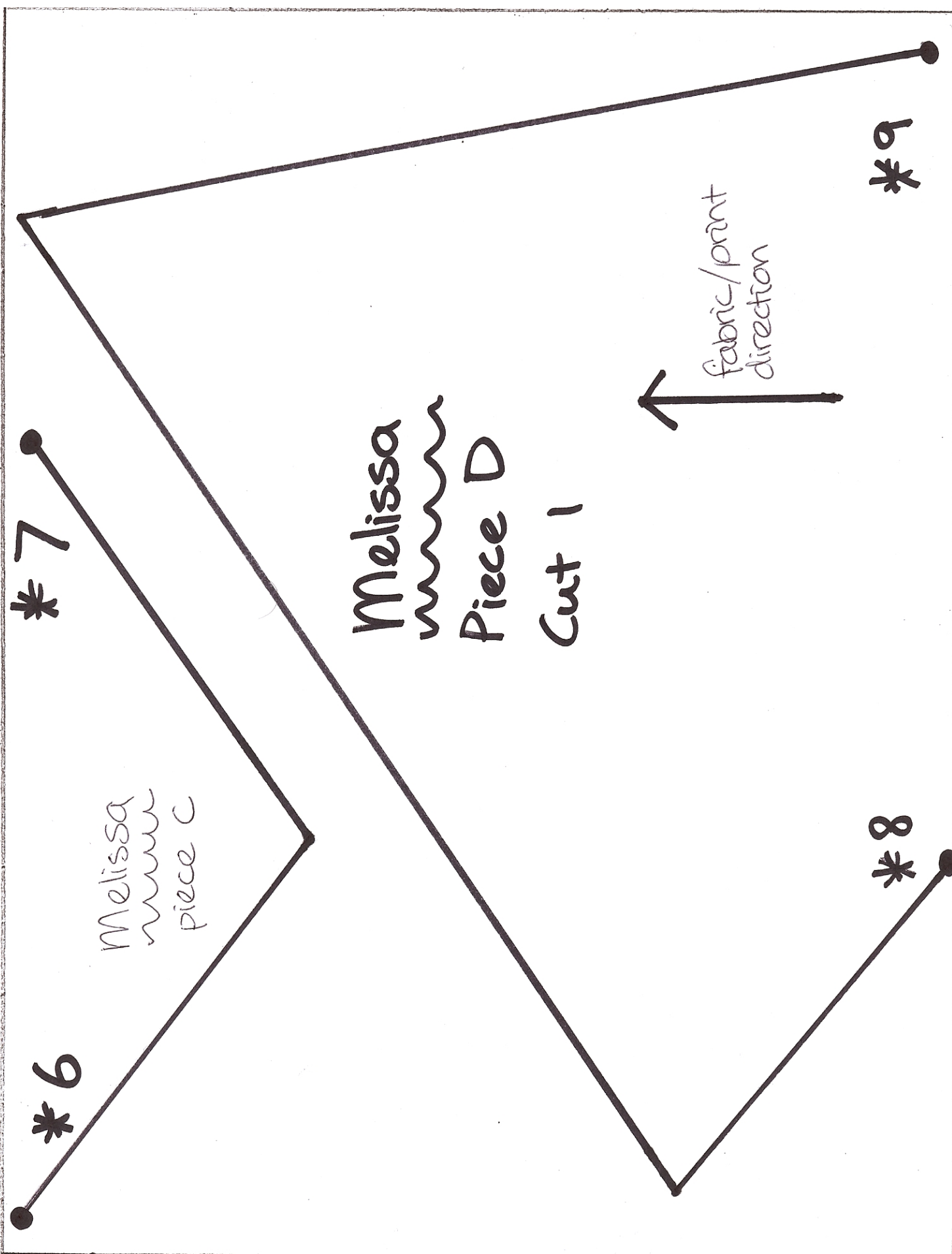
fabric/print  
direction

\* 6

Melissa  
~~~~~

Piece C

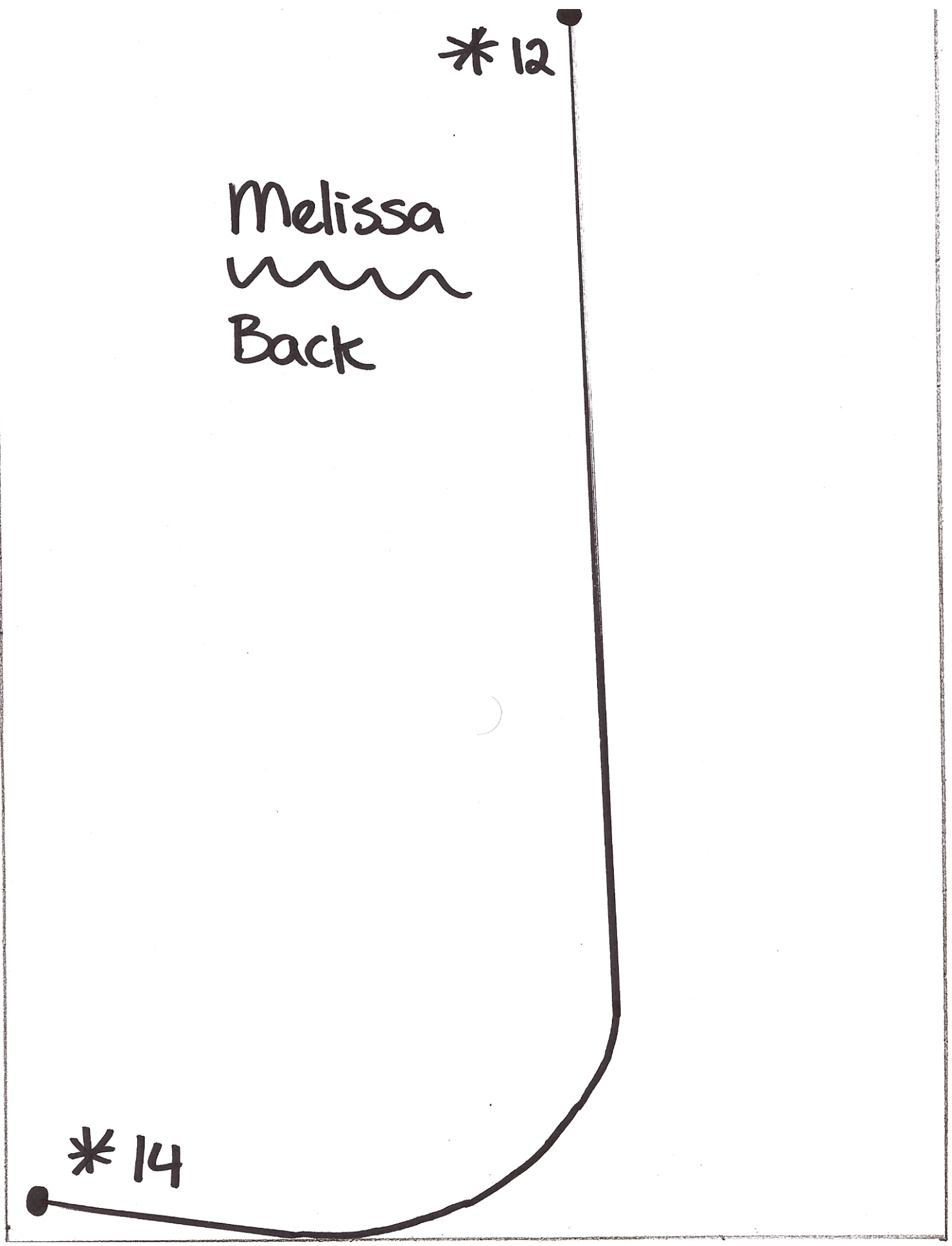
\* 7



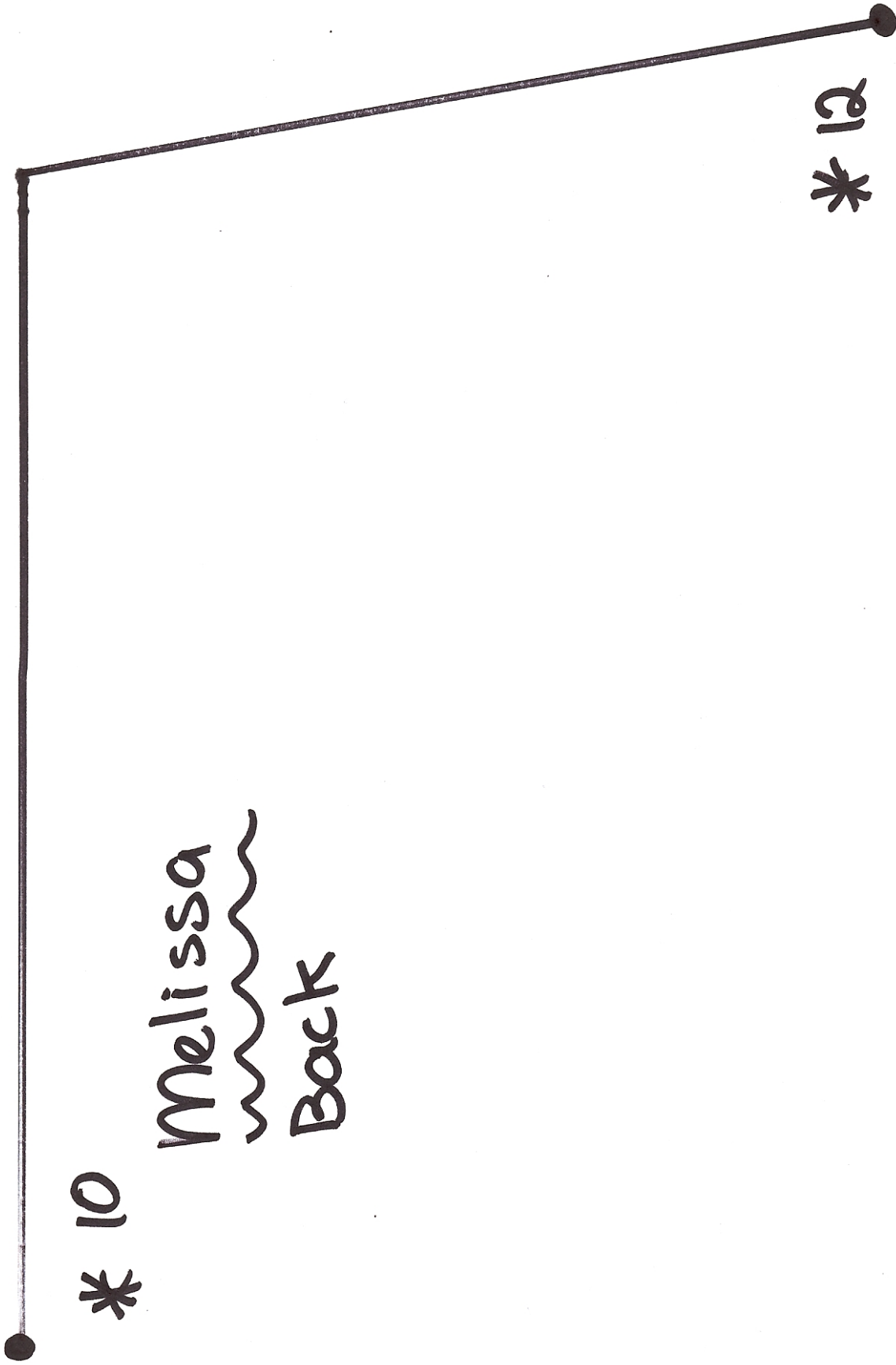
\* 12

Melissa  
~~~~~  
Back

\* 14







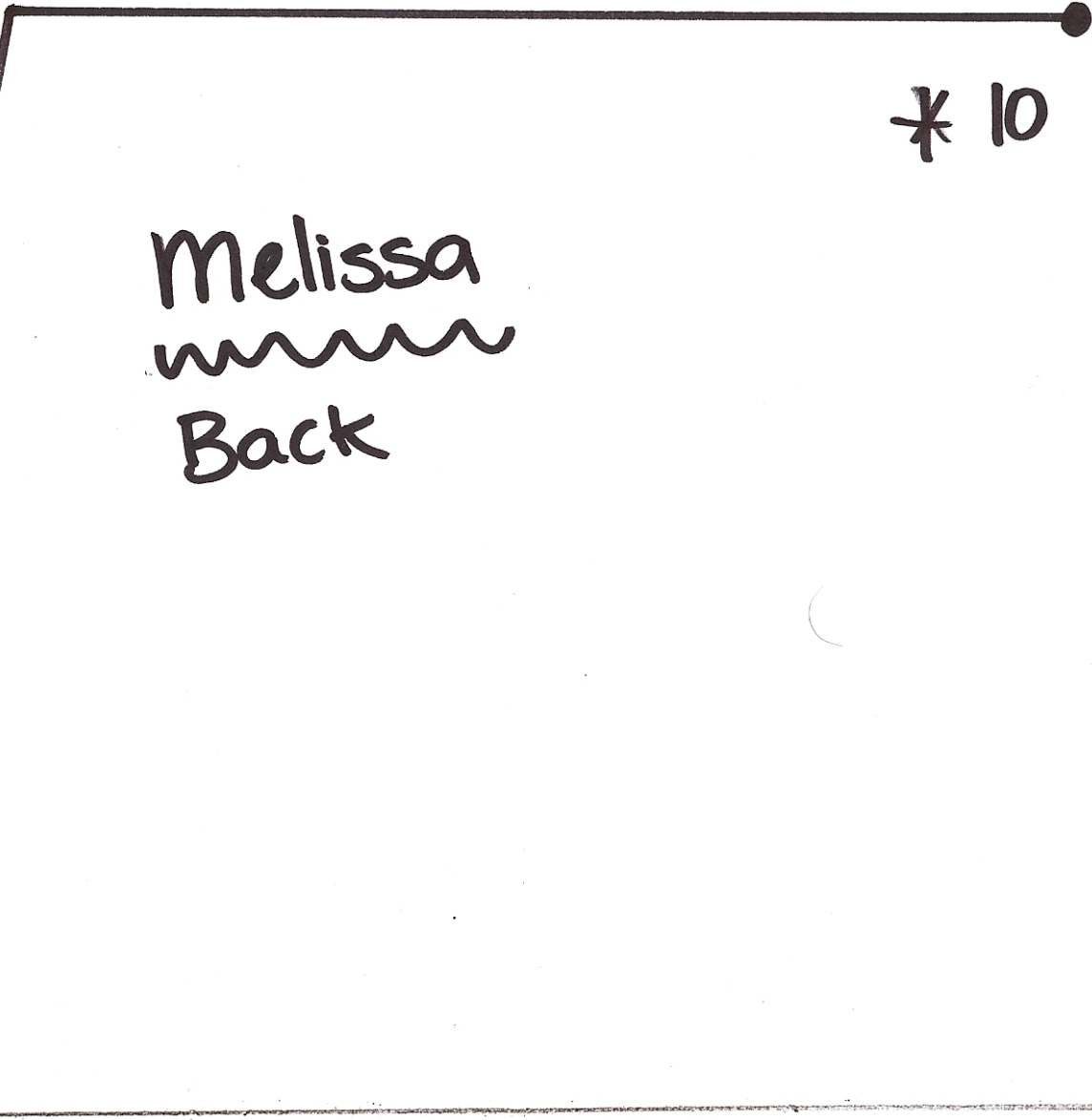
\* 10

Melissa  
Back

\* 12



Melissa  
Piece D



Melissa  
~~~~~  
Back

\* 11

Melissa  
~~~~~  
Back

© 2009 Crystelle Boutique  
Marijke Mill, designer

\* 13

Melissa

Back

Cut 1

Cut 2 lining

also:

Cut 1 patch pocket  
11" x 12"

Cut 1 zippered  
(opt.) pocket  
10" x 12"

\* 13

\* 14



Crystelle  
©  
Boutique

Melissa Handbag Pattern  
©2009 Crystelle Boutique

Marijke Mill, Designer

[www.CrystelleBoutique.com](http://www.CrystelleBoutique.com)