

Crystelle
BOUTIQUE



Dedre Backpack

STEP BY STEP INSTRUCTIONS WITH PICTURES

Copyright CrystelleBoutique.com 2010



Dedre Backpack Pattern

As seen in Haute Handbags Spring 2010

© 2010 Crystelle Boutique, Marijke Mill designer

Fabric

- | | | | |
|------------|-------------------|---------------------|-------------------------|
| • Fabric A | ¾ yard (45"wide) | or ½ yard (54"wide) | <i>Exterior, etc.</i> |
| • Fabric B | ¾yard (45"wide) | or ¾ yard (54"wide) | <i>Big Pocket, etc.</i> |
| • Fabric C | ¾ yard (45 "wide) | or ½ yard (54"wide) | <i>Interior, etc.</i> |

Other Supplies

- Two D or O-rings
 - 4 yards cording
 - Coordinating thread
 -
- For Optional Zippered Pocket:
- 9" Zipper
 - 7" Ribbon
 - Fray Check

Note: If you decide to use a lightweight cotton fabric, it is recommended that you line all pieces with interfacing or fusible fleece. For sturdy home décor cotton fabric, that is not necessary. In the example used in these pictures, the fabric was decorator cotton, so interfacing was not needed....

For instructions on fashioning the poppies used on the Dedre Backpack in Haute Handbags, please refer to CrystelleBoutique.com

Cutting Instructions

Front and Back Panels

- Exterior Front and Back Panels—Fabric A (cut 2) **15 x 20 inch**
- Interior Front and Back Panels—Fabric C (cut 2) **15 x 19 ½ inch**

Interior Patch Pocket

- **12 X 16 inch**—Fabric B (cut 1)

Exterior Zippered Pocket

- **10 x 12 inch**—Fabric C (cut 1)

Exterior Pocket

- **11 x 26 inch**—Fabric B (cut 1) Round all four corners using the enclosed template

Pocket Flap

- **11 x 11 ½ inch**—Fabric A (cut 1) Round all four corners using the enclosed template

Tabs

- **3 x 4 inch**—Fabric A (cut 2)



Fabric A	<i>Front and Back Panels</i>	<i>Pocket Flap</i>	<i>Tabs</i>
Fabric B	<i>Exterior Pocket</i>	<i>Interior Patch Pocket</i>	
Fabric C	<i>Interior Panels</i>	<i>Zippered Pocket</i>	

Sewing Instructions

- Cut out all pattern pieces. Round the corners using the included template on the exterior pocket and pocket flap.
- (Opt.) Apply interfacing or fusible fleece to lightweight fabrics using manufacturer's instructions.



Exterior Front Pocket and Flap

- Fold pocket flap in half right sides together (width is now 11 ½ "). Pin in place.
- Sew along edges (1/4 inch seam) leaving a 4 inch opening in the middle for turning.
- Clip along the rounded corners.
- Turn. Press.



- Topstitch at ⅓ inch along the sewn edges.

- Fold exterior pocket right sides together (width is now 11 inches)
- Sew along edges using a ¼ inch seam.
- Leave a 4 inch opening at the bottom for turning.





- Clip around the rounded corners



- Turn. Press.



- Topstitch the top edge at $\frac{1}{4}$ inch



- Place centered on front exterior panel 2 $\frac{1}{2}$ inches from the bottom. Pin in place. (You may have to alter this measurement)
- Topstitch $\frac{1}{8}$ inch around the sides and bottom.



- Place the pocket flap 3 $\frac{1}{2}$ inches from the top, centered over pocket. (You may have to alter this measurement)
- Pin in place.
- Topstitch along top edge at $\frac{1}{8}$ inch.



Tabs

- Fold side of tab about $\frac{3}{4}$ inch into the middle. Press.



- Repeat on other side. Press
- The tabs now measure $1\frac{1}{2}$ x 4 inches



- Topstitch along the sides at about $\frac{1}{8}$ inch.



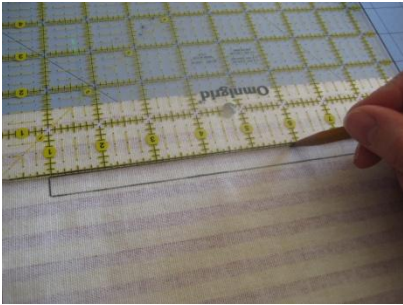
- Fold one O or D-ring into a tab. Baste the end. Repeat for other tab.



- Pin tab-rings to bottom left and right corners of exterior front panel, one inch from the bottom. Baste in place.

Zippered Pocket

This pocket is completely optional. If installing zippers scares you, or you just don't feel the need for one, JUST SKIP IT! However, these instructions with accompanying pictures make installing zippers a BREEZE...



Here we go:

- Place the zippered pocket fabric wrong side up in front of you, 10 inches as the width, 12 inches tall
- 1 ½ inches from the top, draw a centered horizontal rectangle ½ by 8 inch.

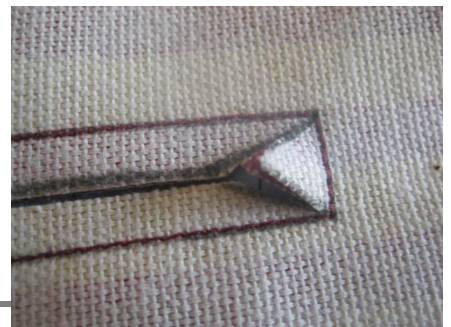


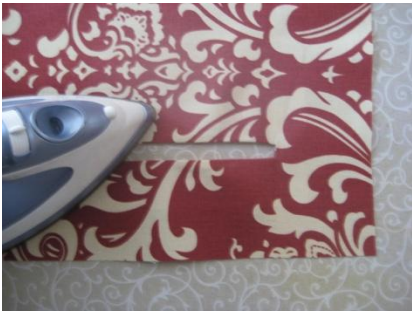
- Place this zippered pocket fabric sideways on the exterior side panel, right sides together. 1 ½ inch from the left side, 2 inches from the bottom.
- Pin in place.

- Stitch on the lines of the rectangle, using a tiny stitch length.



- Cut an opening down the center of the rectangle. Stop at ½ inch from the end.
- Carefully cut toward the corners.

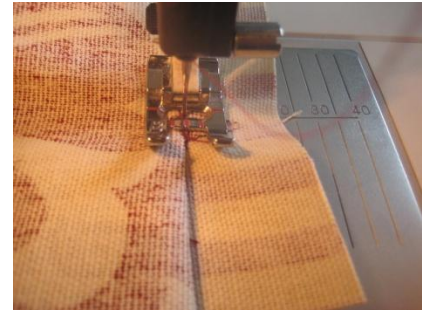




- Turn the pocket through the hole and press, making sure it looks nice and smooth and straight.



- Flip the exterior panel over so the little triangle shows. Sew over that triangle. Repeat on other side.



- Center the zipper under the opening. Pin in place.
- Stitch close to the edge using a zipper-foot.



- On the back side, fold the pocket fabric over itself. Pin the sides together, and stitch in place.



- Add the ribbon to the zipper as a zipper-pull. Sew in place.
- Place a drop of fray-check on the ribbon ends. (Opt.)



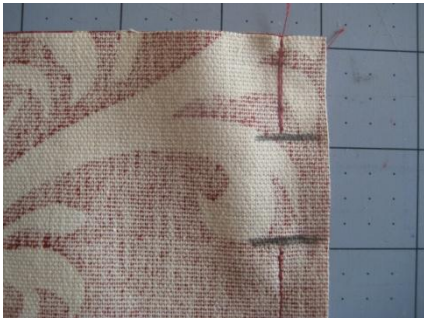
All done with the zipper....!!! ☺

That wasn't so bad, was it?

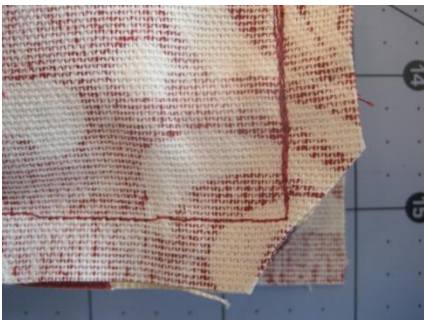


Exterior Bag

- Place exterior front and back panels on top of each other right sides together.
- Pin, then sew sides and bottom (at ½ inch)



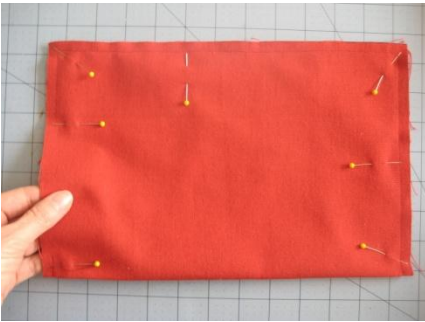
- Important: leave a 1 inch opening 1 inch from the top on both left and right sides.
- Double-stitch over the tabs.



- Trim bottom corners

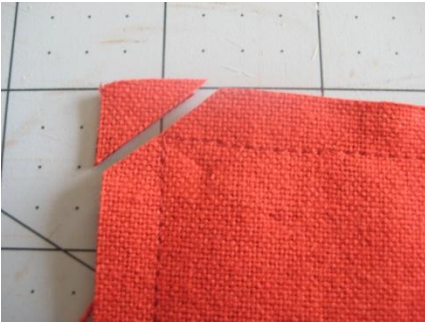


- Open up seam at the top. Top stitch over 1 inch opening, close to the edge. Do so on both sides.



Interior Patch Pocket

- Fold patch pocket fabric in half, right sides together. It now measures 8 x 12 inches.
- Sew the three open sides together at $\frac{1}{4}$ inch. Make sure to leave a 4 inch opening for turning.

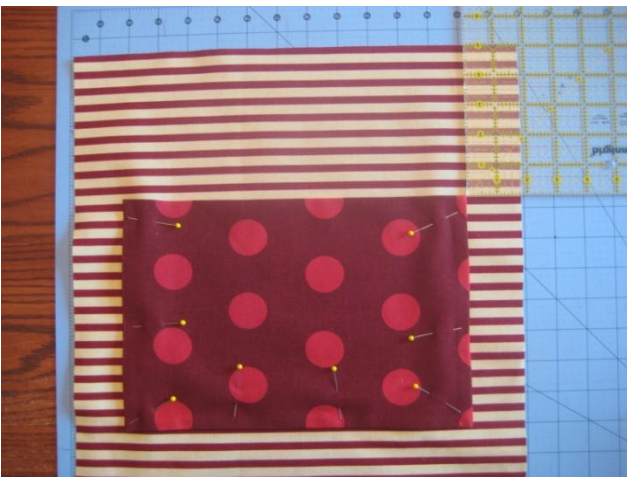


- Trim the corners



- Turn. Fold opening in. Press.

- Pin Patch pocket to interior back panel, 5 inches from the top, $1\frac{3}{4}$ inch on each sides.



- Stitch close to the edges on the sides and bottom.
- (Opt.) add a 2 inch divider on the left for pens/pencils.



Interior Bag

- Pin interior front and back panels right sides together.
- Sew leaving a 7" opening at the bottom for turning.
- Trim bottom two corners.

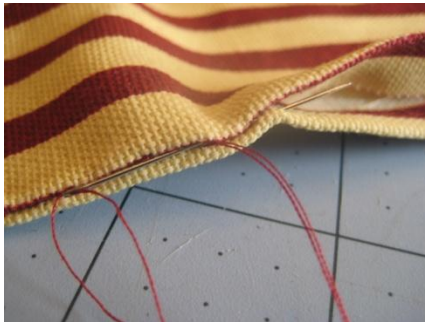


Finishing Touches

- Insert interior bag into exterior bag, right sides together.
- Pin top edges together, lining up side seams.



- Sew at ½ inch.



- Turn bag right side out through the hole.
- Hand-stitch opening in lining closed.



- Insert interior bag into exterior bag.
- Press top of bag into a nice sharp crease.



- Topstitch top of bag at ½ inch, then again at 1 ½ inch, creating a sleeve.



- Cut cord into two 2-yard pieces.
- Putting a piece of tape over the ends prevents the cord from fraying.



- Using a safety pin thread one cord from left hole all the way around, back out the same left hole.



- Go through the D or O-ring and tie a knot.
- Repeat on other side.
- You may now remove the tape from the cord.

All finished! ☺ Good work!!!!

Enjoy your new Dedre Backpack!





Dedre Backpack Pattern

Rounded Template

©CrystelleBoutique 2010